



# Junction Box

Non-North American Market

HD51 Series

Page 1 of 3



## FEATURES

The EX-HD51-X-X-X series junction boxes intend to be used for explosive atmospheres. For general wiring in hazardous locations. Copper free aluminum enclosure. Ex d type flameproof enclosure. Four types of enclosures available. The degree of protection is IP66.

## APPLICATION

	ATEX/IECEx					
	Zone 1		Zone 2			
Zone	1	2	1	2	1	2
For use in	x	x	x	x	x	x

## ORDERING GUIDE

EX-HD51	-□	-□	-□
Ex-proof Light Switch	Product Type: A,B,C,KB1	Number of entrances: 1,2,2A,2B,3,3A,3B, 4,5,6,7,8	Thread Symbol: M, NPT

## TECHNICAL DATA

IECEx Certification For EX-HD51-A1, A2A, A2B, A3,A4, A5, B3, B3A, C4A, C4B, C6, C8, KB1 series junction box:	Ex db IIC T6/T5 Gb (Except EX-HD51-KB1/*), Ex db IIB+H2 T6/T5 Gb (EX-HD51-KB1/*), Ex tb IIIC T80°C/T95°C Db
ATEX Certification For EX-HD51-A1, A2A, A2B, A3,A4, A5, B3, B3A, C4A, C4B, C6, C8, KB1 series junction box:	Ex db IIC T6/T5 Gb (Except EX-HD51-KB1/*) Ex db IIB+H2 T6/T5 Gb (EX-HD51-KB1/*) Ex tb IIIC T80°C/T95°C Db
Rated Voltage	Max.800VAC
Rated Current	24A, 27A, 32A, 41A
Ambient Temperature	-60°C to + 55°C (-76°F to +131°F)
Type of Flameproof Joint	Type A, B, C: Threaded joints Type KB1: Flanged and threaded joints

### SPECIFICATION

The rated voltage of the junction box is 800Vac.

In the final installation, cable entry amounts and terminal information shall comply with following table:


**A-5**

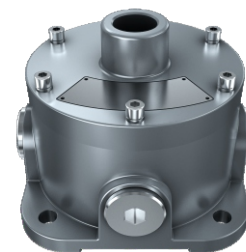
**A-4**

**B-3A**

**B-3B**

Model	Terminal Spec.	Number of Terminal Block	Cable Entry Spec.	Cable Entry Amount.
EX-HD51-A	2.5mm <sup>2</sup> / 24A	Max. 5	½" NPT / M20x1.5	Max. 5
	2.5mm <sup>2</sup> / 24A, 4mm <sup>2</sup> / 32A		¾" NPT / M25x1.5	

Model	Terminal Spec.	Number of Terminal Block	Cable Entry Spec.	Cable Entry Amount.
EX-HD51-B	2.5mm <sup>2</sup> / 24A	Max. 5	½" NPT / M20x1.5	Max. 5
	2.5mm <sup>2</sup> / 24A, 4mm <sup>2</sup> / 32A		¾" NPT / M25x1.5	


**C**

**KB1**

Model	Terminal Spec.	Number of Terminal Block	Cable Entry Spec.	Cable Entry Amount.
EX-HD51-C	2.5mm <sup>2</sup> / 24A	Max. 12	½" NPT / M20x1.5	Max. 8
	2.5mm <sup>2</sup> / 24A	Max. 12	¾" NPT / M25x1.5	
	4mm <sup>2</sup> / 32A	Max. 10	¾" NPT / M25x1.5	
	6mm <sup>2</sup> / 41A	Max. 8	1" NPT / M32x1.5	

Model	Terminal Spec.	Number of Terminal Block	Cable Entry Spec.	Cable Entry Amount.
EX-HD51-KB1	2.5mm <sup>2</sup> / 24A	Max. 4	½" NPT / M20x1.5	Max. 5
	2.5mm <sup>2</sup> / 24A, 4mm <sup>2</sup> / 27A		¾" NPT / M25x1.5	



### DIMENSION

Unit: mm

